



GAT MONTHLY MEMBERSHIP PROGRESS REPORT

Results as of: 3/31/2023

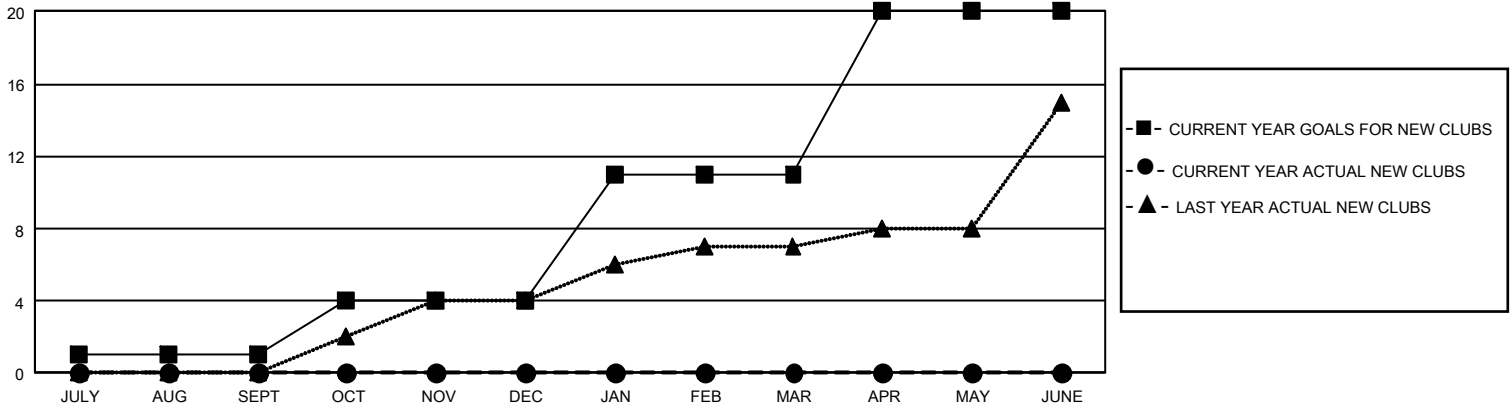
GMT Constitutional Area 3, Group H

REPORT DOES NOT INCLUDE CLUBS IN UNDISTRICTED AREAS.

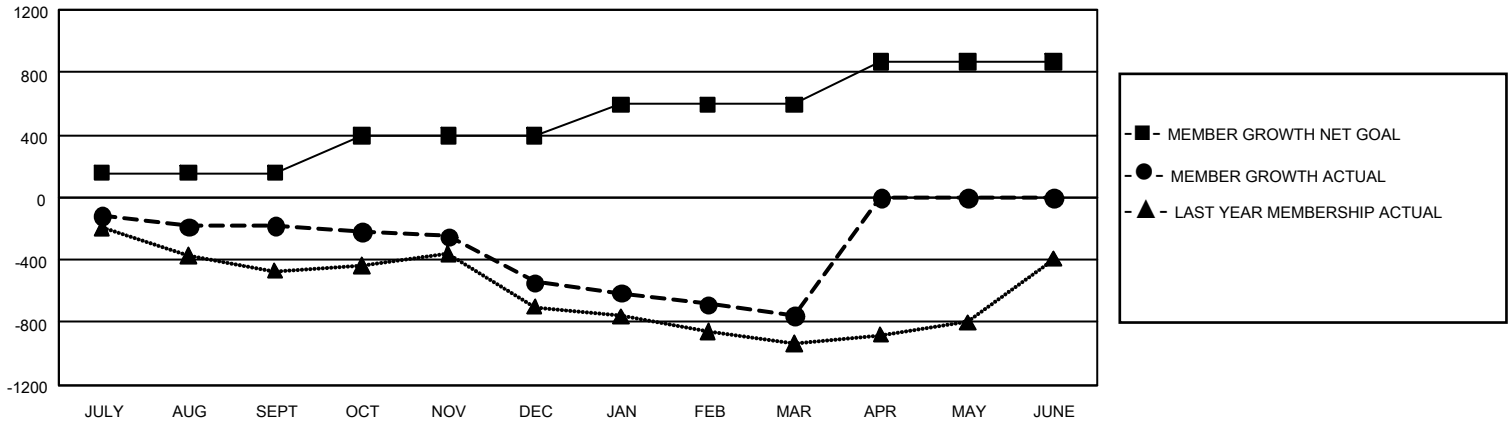
Clubs			
RESULTS FOR 2022-2023			
QUARTER	NEW CLUB GOAL	NEW CLUBS	DROPPED CLUBS
JULY/AUG/SEPT	3	0	2
OCT/NOV/DEC	9	0	5
JAN/FEB/MAR	21	0	5
APR/MAY/JUNE	27	0	0

Members			
RESULTS FOR 2022-2023			
QUARTER	MEMBER GROWTH NET GOAL	MEMBER GROWTH ACTUAL	DROPPED MEMBERS ACTUAL (including transfers)
JULY/AUG/SEPT	155	275	435
OCT/NOV/DEC	240	314	654
JAN/FEB/MAR	200	187	360
APR/MAY/JUNE	275	0	0

GOALS AND ACTUAL NEW CLUBS CUMULATIVE



GOALS AND ACTUAL MEMBERS CUMULATIVE



DROPPED CLUBS: 12	210 CLUBS OF 491 ADDED 1 OR MORE NEW MEMBERS	<u>GENDER DISTRIBUTION</u>	
		MALE	6,998 (49.65%)
<u>DROPPED MEMBERS</u>		FEMALE	7,092 (50.32%)
		NON BINARY	0 (0.00%)
DECEASED	79	PREFER NOT TO ANSWER	4 (0.03%)
CLUB CANCELLED	97	TOTAL FAMILY UNIT MEMBERS	7,338
OTHER	1,272	FAMILY MEMBERS PAYING HALF DUES	3,746
TOTAL	1,448	CLICK HERE FOR CUMULATIVE MEMBERSHIP DATA	